

**P 200 AXE SMART**  
**THERE IN A FLASH,**  
**COMPACT SET-UP**  
**AND FLEXIBLE HEIGHT**

LIFETIME EXCELLENCE



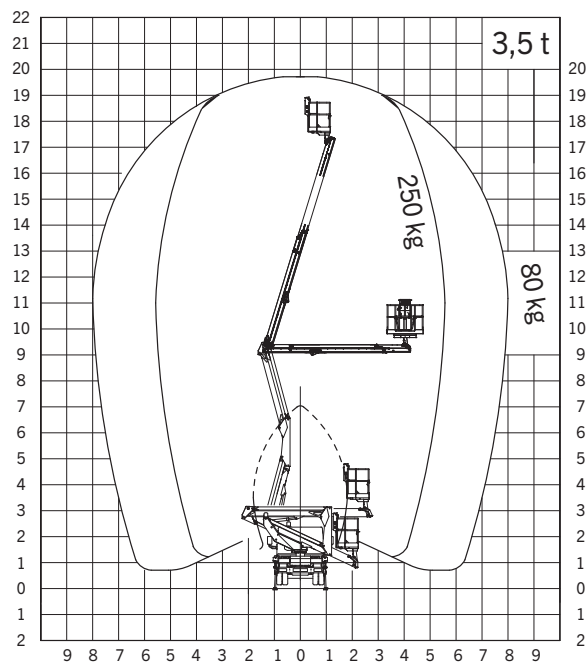
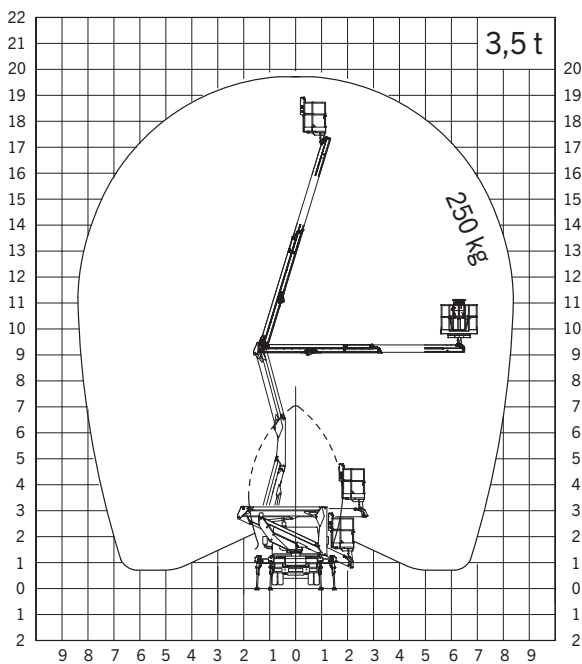
## TECHNICAL SPECIFICATIONS

Max. working height	19.7 m
Max. basket bottom height	17.7 m
Max. outreach	8.40 m
Angle of main boom	-25° a + 73°
Turntable rotation	370°
Basket rotation	2 x 90°
Basket load	250 kg
Size of basket	1.4 x 0.85 x 1.1 m
Height in transport position	2.89 m
Width in transport position	2.10 m
Length in transport position	5.39 m
GVW	3500 kg

## OPTIONAL

Fiberglass basket
Electric pump for internal use
Working adjustable light 60 W on the basket
Insulation 1000 V
12 V electric pump
Aluminium side panels
Customised paintwork boom

## WORKING DIAGRAMS



## DIMENSIONS



SALES DEALER