



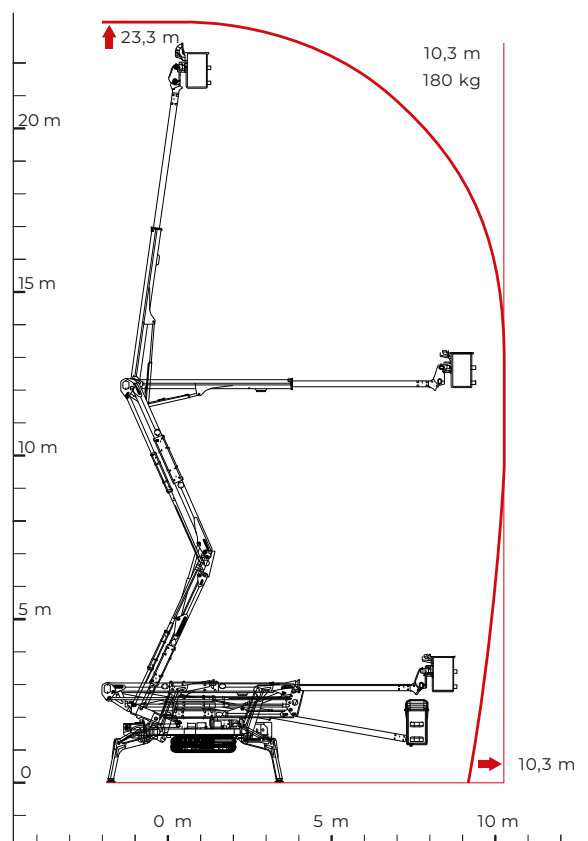
TECHNICAL SHEET

PERFORMANCE AND DIMENSIONS

Main features

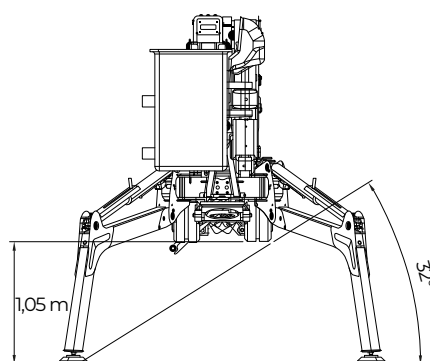
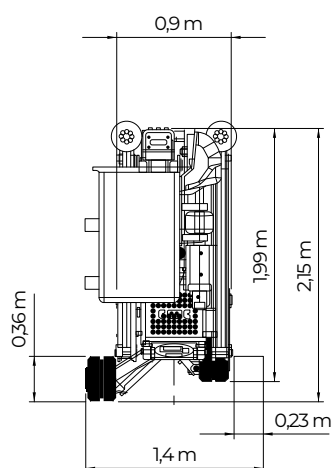
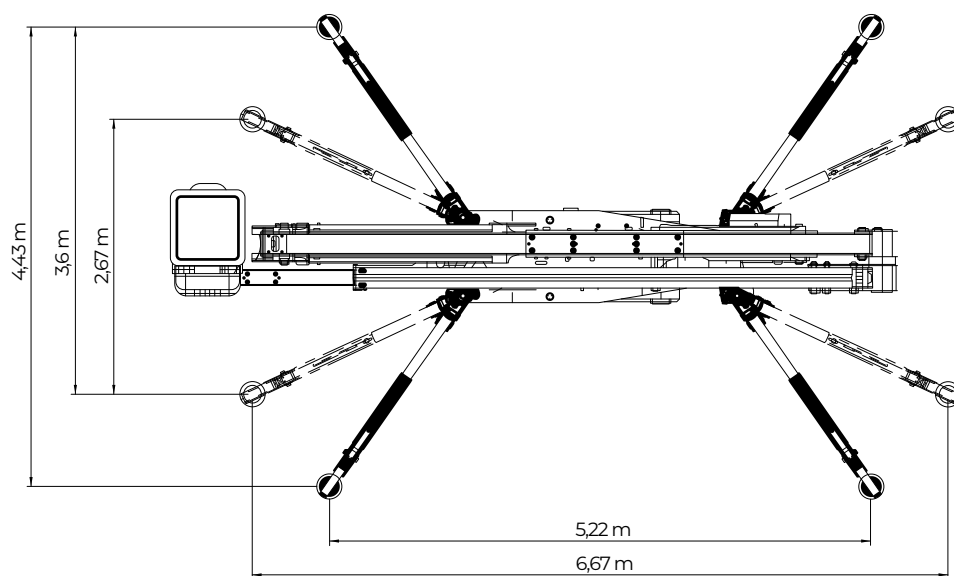
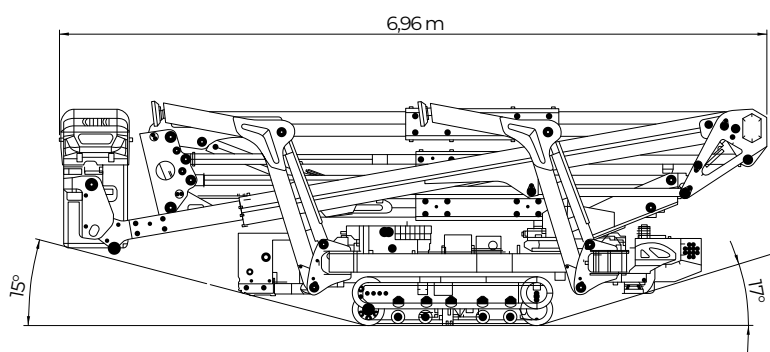
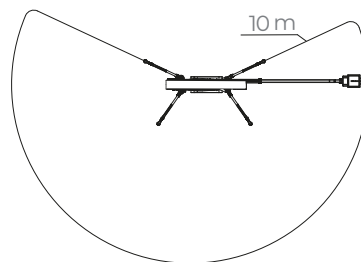
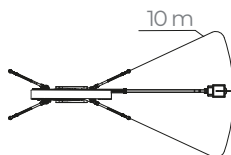
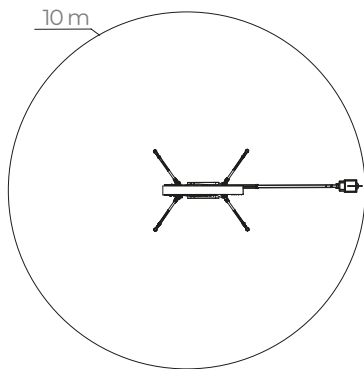
Double pantograph geometric platform, with the widest outreach without limiting devices in its category. Electrically isolated up to 46kV, it allows it to work safely on or near high voltage lines. With its 23 meters of working height, its three areas of stabilization, the automatic leveling of the stabilizers, is able to operate at its best in any condition.

| | |
|---------------------------|-----------------------------------|
| Max. working height | 23,3 m |
| Max. outreach with 180 kg | 10,3 m |
| Platform height | 21,3 m |
| Max. load in basket | 180 kg |
| Basket dimensions | 0,6 x 0,6 x 1,1 m |
| Basket rotation | +90° |
| Turret rotation | +/- 200° (400° continuous) |
| Total weight | 3930 Kg |



C.M.C. s.r.l.
Via Bitritto, 119 - 70124 Bari - Italy
Tel. +39 080 532 66 06
cmclift.com - info@cmclift.com





| | | | |
|--|--|--------------------|--------------------|
| PERFORMANCE | | | |
| Max. working height | 23,3 m | | |
| Max. working outreach | 10,3 m (with 180 kg) | | |
| Max. basket capacity | 180 kg | | |
| Turret rotation | +/-200° (tot. 400°) | | |
| Basket rotation | +/-90° | | |
| Max. ramp attack slope (basket side) with tracks closed/opened | 15°/7° - 14%/30,5% | | |
| Max. ramp attack slope (engine side) with tracks closed/opened | 8°/17° - 10%/26% | | |
| Max. longitudinal slope to travel | 19° - 34% | | |
| DIMENSIONS | | | |
| Total lenght with basket bracket rotated | 7,20m | | |
| Height in driving position (with tracks closed) | 1,99 m | | |
| Height in driving position (with tracks opened) | 2,15 m | | |
| Total width without basket | 0,89 m | | |
| Outriggers plate Ø | 0,18 m | | |
| Total weight (standard equipment) | 3930 kg | | |
| BASKETS AVAILABLE | | | |
| One man fiberglass basket (L x W x H) | 0,60x0,60x1,10 | | |
| PRESSURES | | | |
| Max. pressure on the foot | 9,03 kg/cm² | | |
| Max. pressure on the tracks | 0,28 kg/cm² | | |
| Max. pressure in work with 4 outriggers opened | 173,00 kg/m² | | |
| Max. pressure in work with 4 outriggers closed | 225,00 kg/m² | | |
| Max. pressure in work with 2 outriggers opened and 2 outriggers closed | 189,00 kg/m² | | |
| TRAVEL SPEED (KM/H)** | | | |
| Kubota Z902 | Speed 1: 0,50 km/h | Speed 2: 1,13 km/h | Speed 3: 2,40 km/h |
| Auxiliary electric engine 110/230 V* | Speed 1: 0,36 km/h | Speed 2: 0,36 km/h | Speed 3: 0,61 km/h |
| Full Lithium version 48 V* | Speed 1: 0,37 km/h | Speed 2: 0,75 km/h | Speed 3: 1,57 km/h |
| POWERS | | | |
| Standard engines | Kubota D902-E4B diesel engine, 16.1 kW (21.6 HP), 3200 rpm | | |
| *Options engines | Auxiliary electric engine 120 V - 1.6 kW | | |
| Fuel tank capacity | 30 l | | |
| * Options - ** these data may vary depending on the accessories chosen | | | |